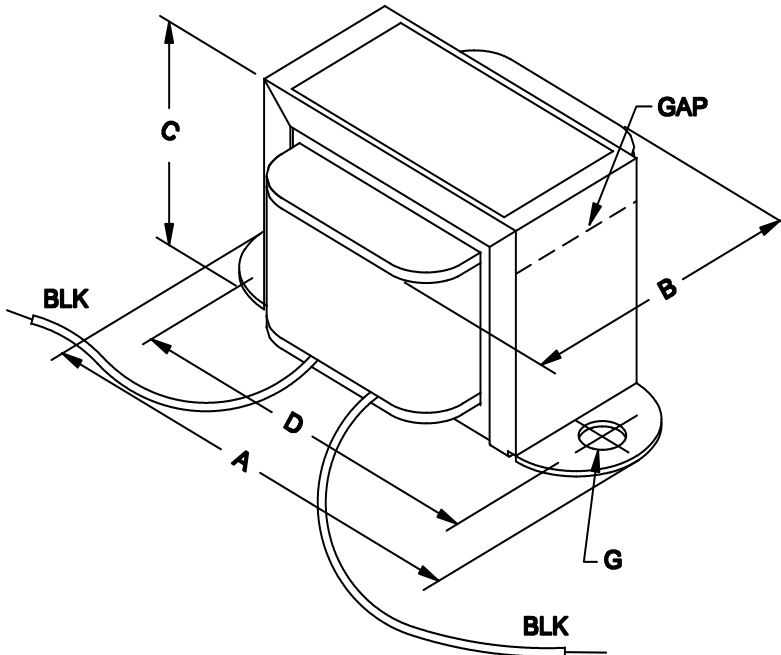




## D.C. Reactors or Filter Chokes Low to Medium Current

### Features

- Economical “open bracket” - channel mount.
- Tolerance of 15% on both inductance & resistance.
- Inductances measured at rated D.C. current.
- Minimum 5” long leads.
- Units will exhibit less inductance at slightly higher currents or more inductance at lower currents.
- Perfect for high voltage power supply filtering.
- Every unit is Hipot tested (100%) at 1,500 VAC
- Units are vacuum impregnated with polyurethane varnish for quiet and long life operation.



| Mechanical                    |                   |
|-------------------------------|-------------------|
| A                             | 3.25" / 82.6 mm   |
| B                             | 2" / 50.8 mm      |
| C                             | 2" / 50.8 mm      |
| D                             | 2.81" / 71.4 mm   |
| G                             | 0.19" / 4.8 mm    |
| Weight                        | 1.5 lbs / 0.68 kg |
| Electrical                    |                   |
| Inductance (+/- 15%)          | 320mH             |
| D.C. Current                  | 600 ma.           |
| Resistance (+/- 15%)          | 7.8 ohms          |
| Maximum Operating Volt (D.C.) | 400V              |